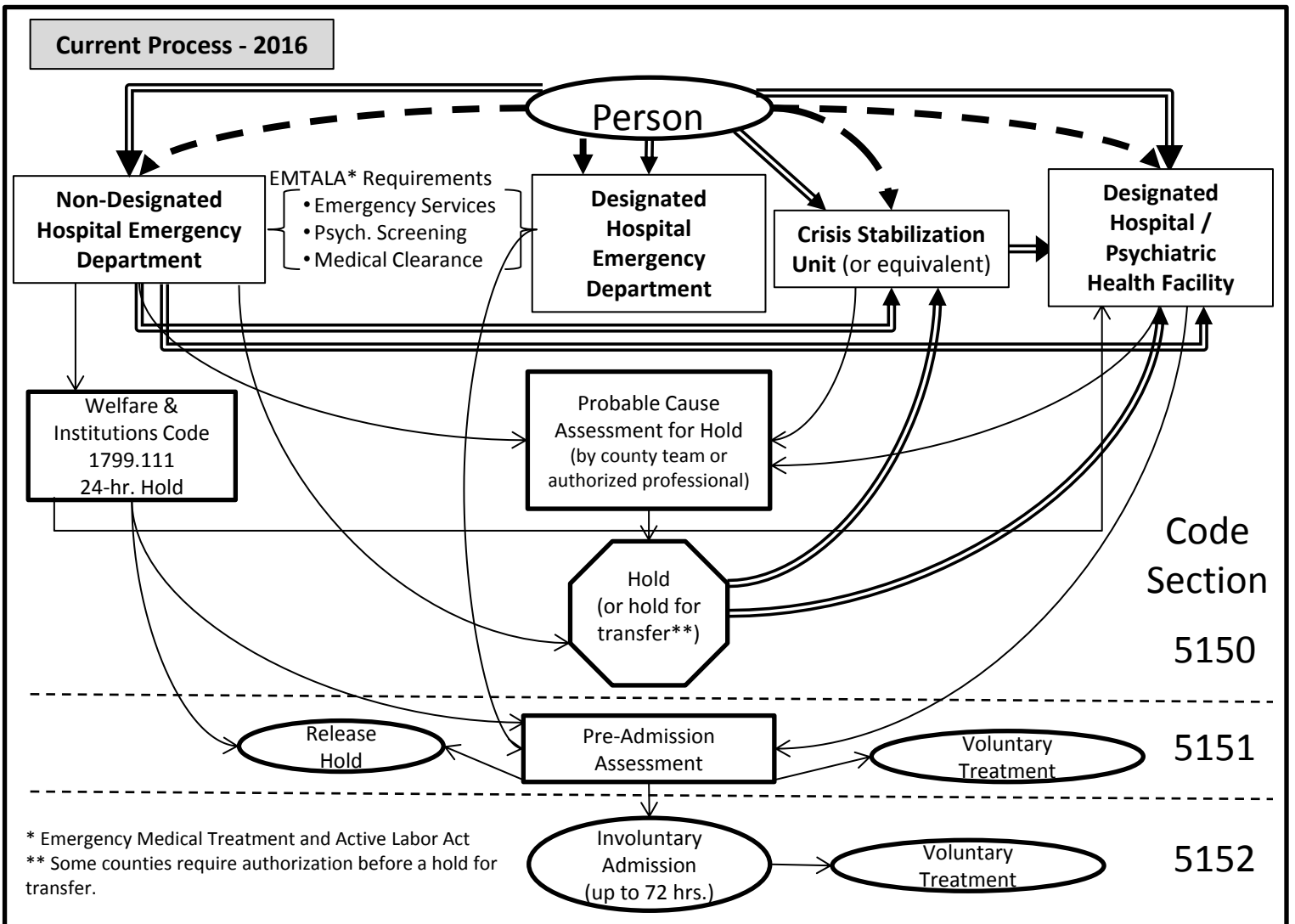
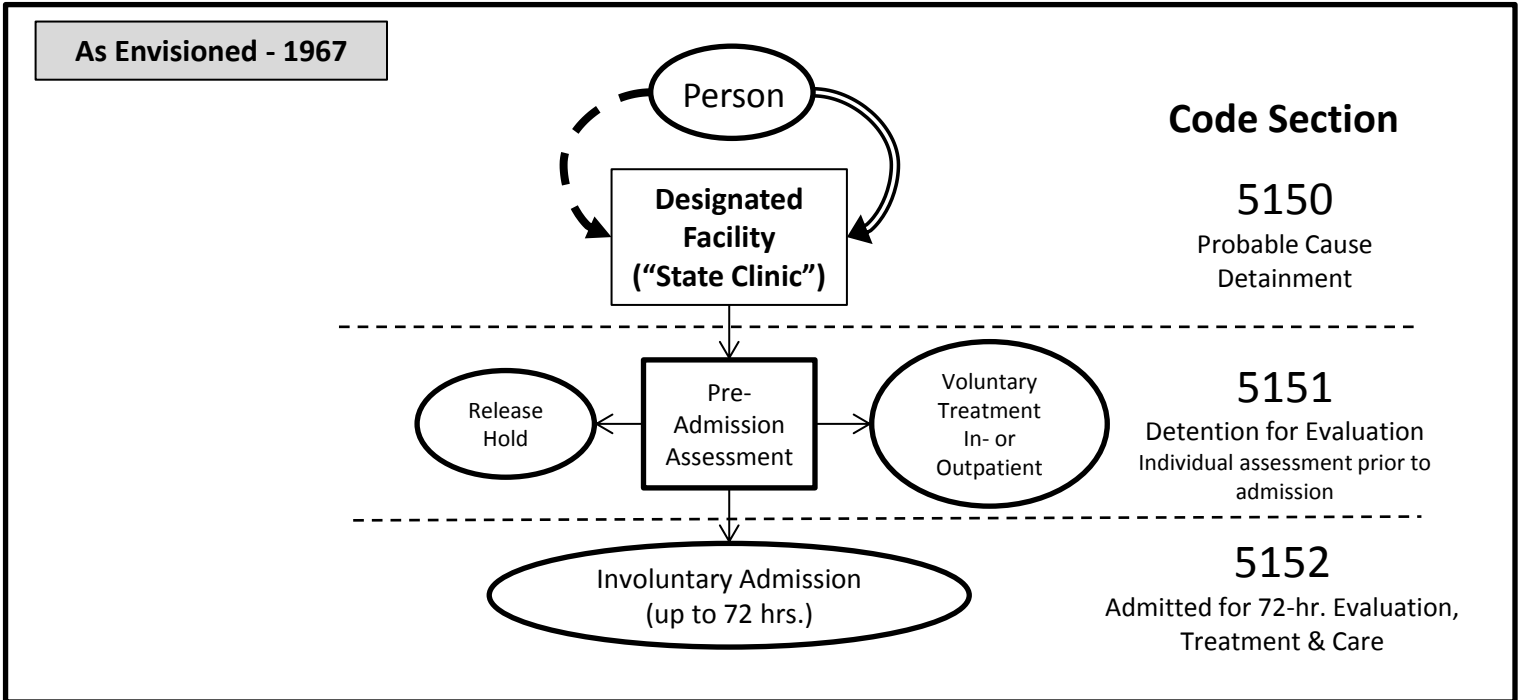


Welfare & Institutions Code – Involuntary Treatment (Chapter 2)
Article 1 – Detention of Mentally Disordered Persons for Evaluation & Treatment

⇒ Transported by EMS, Police, County Van (detained)

- - - - - ⇒ Walk-in – self or family transport



Proposed Process – 2016 LPS Modernization – AB 1300 (Ridley-Thomas)

⇒ Transported by EMS, Police, County Van (detained)

- - - ⇒ Walk-in – self or family transport

Code Section

5150

5151

5152

